

# ROAD INDEX

A	J	S	STILLWELL RD.	A3
B	K	T	TRAILWOOD RD. (PVT)	F4
B	K	T	BROOKVIEW RD. (PVT)	F3
B	K	T	BUNDYSBURG RD.	F4-F6
B	K	T	BURTON WINDSOR RD.	C6-F5
C	L	U	CHARDON WINDSOR RD.	A2-F2
C	L	U	CLAY STREET	BI-B6
D	M	V	MADISON RD.	D1-D6
D	M	V	MAYFIELD RD.	A4-F4
D	N	W	DURKEE RD.	A6-B6
E	O	X	OLD STATE RD.	A6
F	P	Y	FLOWERSIDE RD. (PVT)	F4
G	Q	Z	PIONEER RD.	B5-F5
G	Q	Z	PLANK RD.	E1-F2
G	Q	Z	PRINCETON RD.	B2-B6
H	R		HAYES RD.	E5
H	R		HUNTLEY RD.	B3-F3
H	R		HUNT RD.	E2-E4

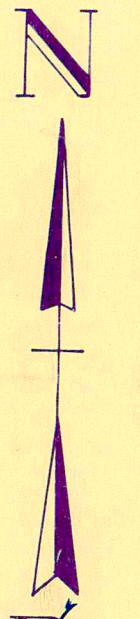
- ① HUNTSBURG ELEM. SCHOOL
- ② AMISH SCHOOL
- ③ AMISH SCHOOL
- ④ HUNTSBURG BAPTIST CH.
- ⑤ HUNTSBURG CONGREGATIONAL CH.
- ⑥ HUNTSBURG CEMETERY
- ⑦ HUNTSBURG CEMETERY
- ⑧ UNITED STATES POST OFFICE
- ⑨ TOWN HALL

**HUNTSBURG TOWNSHIP**

SCALE: 1" = 2000'

ROBERT L. PHILLIPS,  
GEALUGA COUNTY ENGINEER

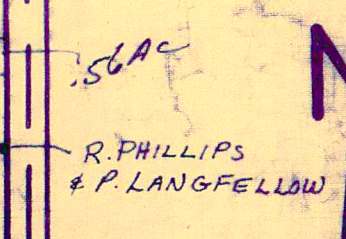
UNPAVED ROADS  
PAVED ROADS  
TOWNSHIP LINE  
COUNTY LINE



MONTVILLE TOWNSHIP

TOWNSHIP

CLARIDON



SCALE 1 = 300

JAN 1, 1994

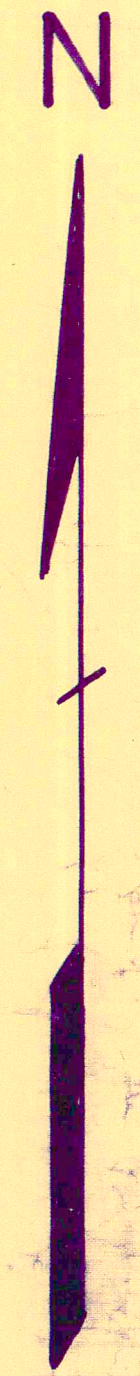
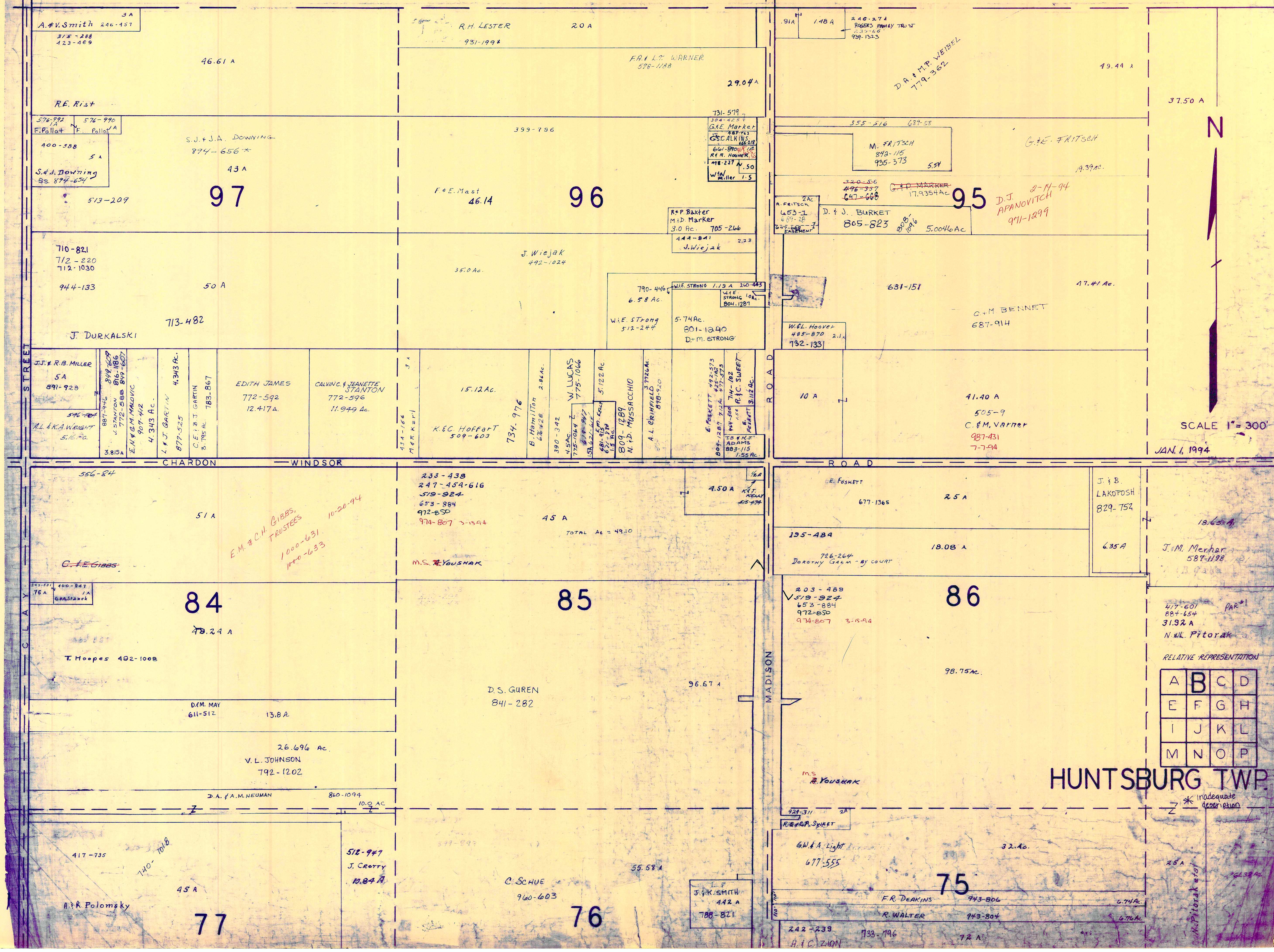
A	B	C	D
E	F	G	H
I	J	K	L
M	N	O	P

HUNTSBURG TWP

RELATIVE REPRESENTATION  
 150' = 1" (approx)  
 1" = 150' (approx)  
 \* Inadequate description  
 Match Line

MONTVILLE

TOWNSHIP



SCALE 1" = 300'

JAN. 1, 1994

RELATIVE REPRESENTATION

A	B	C	D
E	F	G	H
I	J	K	L
M	N	O	P

HUNTSBURG TWP.

\* inadequate description

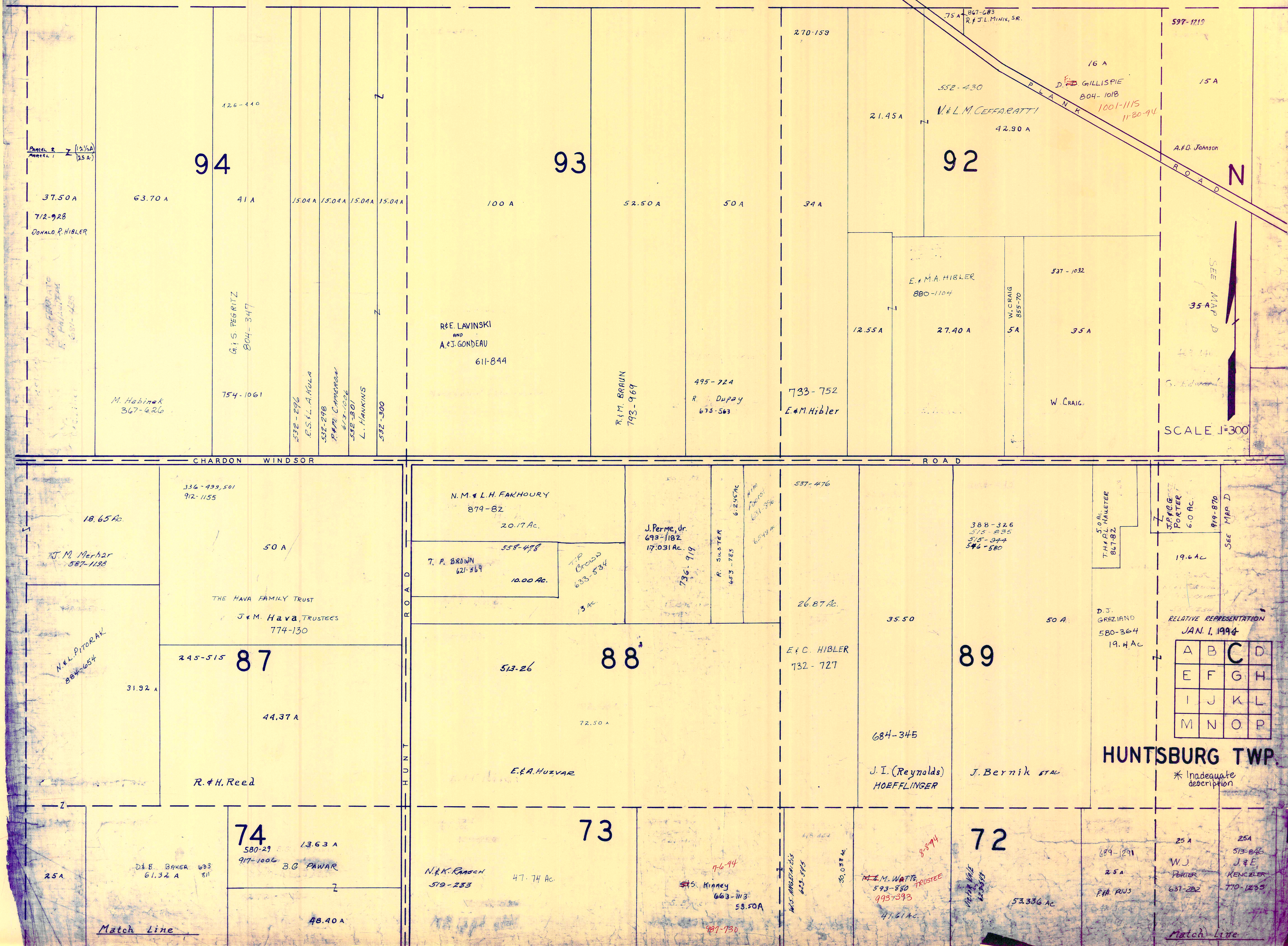
*E.M. & C.H. GIBBS, TRUSTEES*  
 1000-631  
 1100-633  
 10-20-94

*D.J. APANOVITCH*  
 911-1299  
 2-11-94

*G.W. & A. Light*  
 677-555

*M. Pitorak*

MONTVILLE TOWNSHIP



Parcel 2 (12 1/2 A)  
Parcel 1 (25 A)

37.50 A  
712-928  
DONALD R. HIBLER

V. & L. M. CEFFARATTI  
E. HIBLER  
604-405

94  
42.6-410  
63.70 A  
41 A  
15.04 A 15.04 A 15.04 A 15.04 A  
G. S. PEGRITZ  
804-347  
754-1061  
M. HEBINEK  
367-626

93  
100 A  
52.50 A  
50 A  
34 A  
R. & M. BRAUN  
793-969  
495-724  
R. DUPAY  
675-563  
733-752  
E. M. HIBLER

92  
21.45 A  
42.90 A  
E. M. A. HIBLER  
880-1104  
12.55 A  
27.40 A  
5 A  
35 A  
W. CRAIG  
855-70  
537-1032  
35 A  
W. CRAIG

95  
15 A  
A. D. JOHNSON  
ROAD N  
SEE MAP D  
35 A  
SCALE 1"=300'

CHARDON WINDSOR ROAD  
18.65 Ac  
J. M. MERHAR  
587-1138  
N. & L. PITORAK  
804-654  
31.92 A  
336-499, 501  
912-1155  
50 A  
THE HAVA FAMILY TRUST  
J. & M. HAVA, TRUSTEES  
774-130  
245-515  
87  
44.37 A  
R. & H. REED

ROAD  
N. M. & L. H. FAHOURY  
879-82  
20.17 Ac.  
558-498  
T. P. BROWN  
621-869  
10.00 Ac.  
T. P. BROWN  
633-584  
13 Ac.  
J. PERME, JR.  
693-1182  
17.031 Ac.  
736-919  
A. SAUSTER  
653-785  
6.245 Ac.  
M. M. PORTER  
631-296  
6.549 Ac.  
537-476  
26.87 Ac.  
E. C. HIBLER  
732-727

88  
513-26  
72.50 A  
E. & A. HUZVAR  
35.50  
50 A  
388-326  
515-835  
515-974  
546-580  
5.0 AC.  
T. H. D. L. HALETTER  
867-82  
19.6 AC  
D. J. GRAZIAND  
580-364  
19.4 AC  
89  
684-345  
J. I. (REYNOLDS)  
HOEFFLINGER  
J. BERNIK ET AL.

ROAD  
19.6 AC  
D. J. GRAZIAND  
580-364  
19.4 AC  
RELATIVE REPRESENTATION  
JAN. 1, 1994  
A B C D  
E F G H  
I J K L  
M N O P  
HUNTSBURG TWP.  
\* Inadequate description

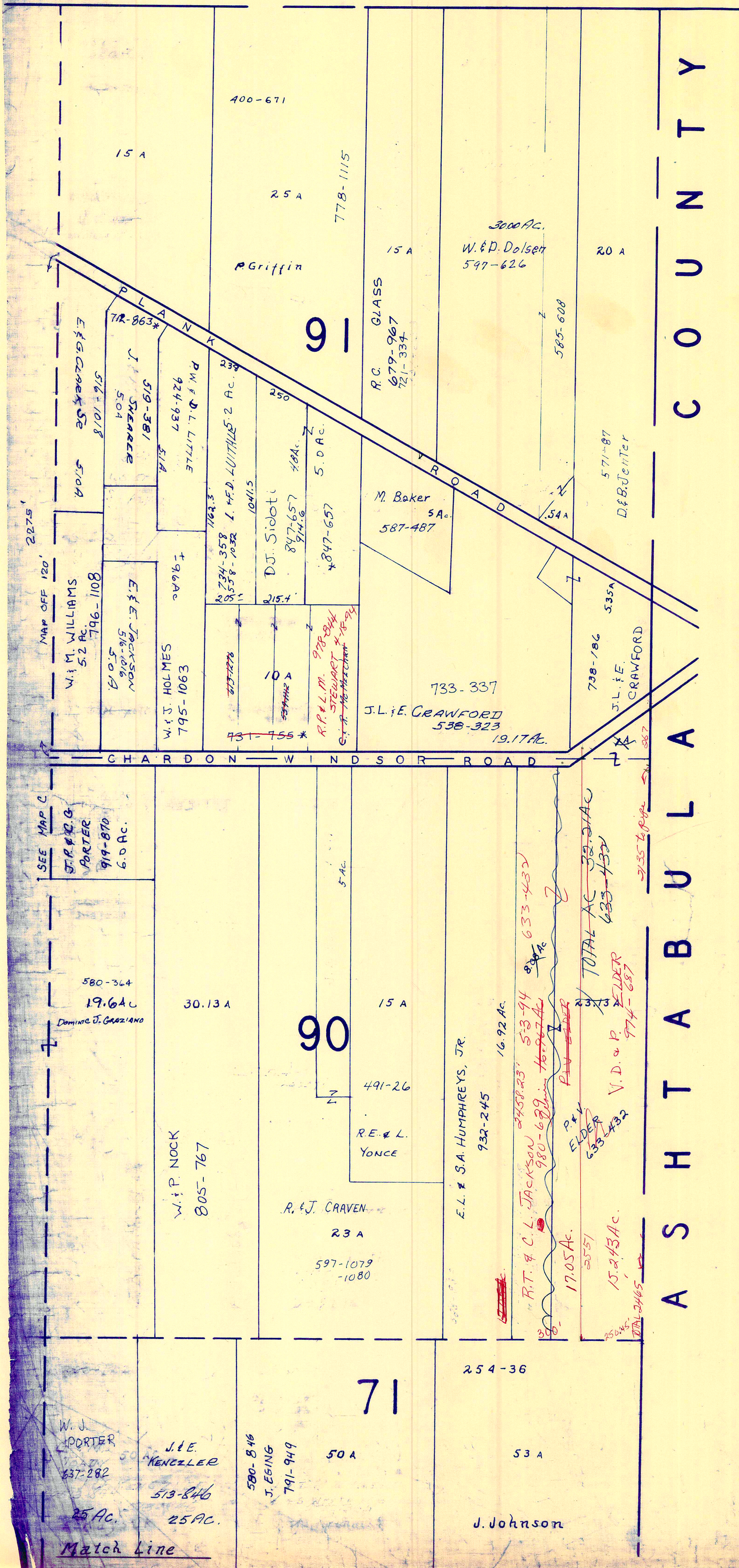
74  
580-29 13.63 A  
917-1006 B. G. PAWAR  
25 A  
D. B. BAKER 603  
61.32 A 811  
48.40 A  
Match Line

73  
47.74 Ac.  
N. & K. RASCH  
519-233  
7-6-94  
S. S. KINNEY  
663-1113  
58.50 A  
981-730

72  
47.61 Ac.  
E. M. WATTS  
593-880 TRUSTEE  
993-393  
41.61 Ac.  
25 A  
689-1291  
25 A  
P. A. RUS  
53.336 Ac.

25 A  
25 A  
513-846  
W. J. PORTER  
637-282  
770-1235  
J. & E. KENZLER  
770-1235  
Match Line

MONTVILLE TWP.



A S H T A B U L A C O U N T Y



SCALE 1"=300'

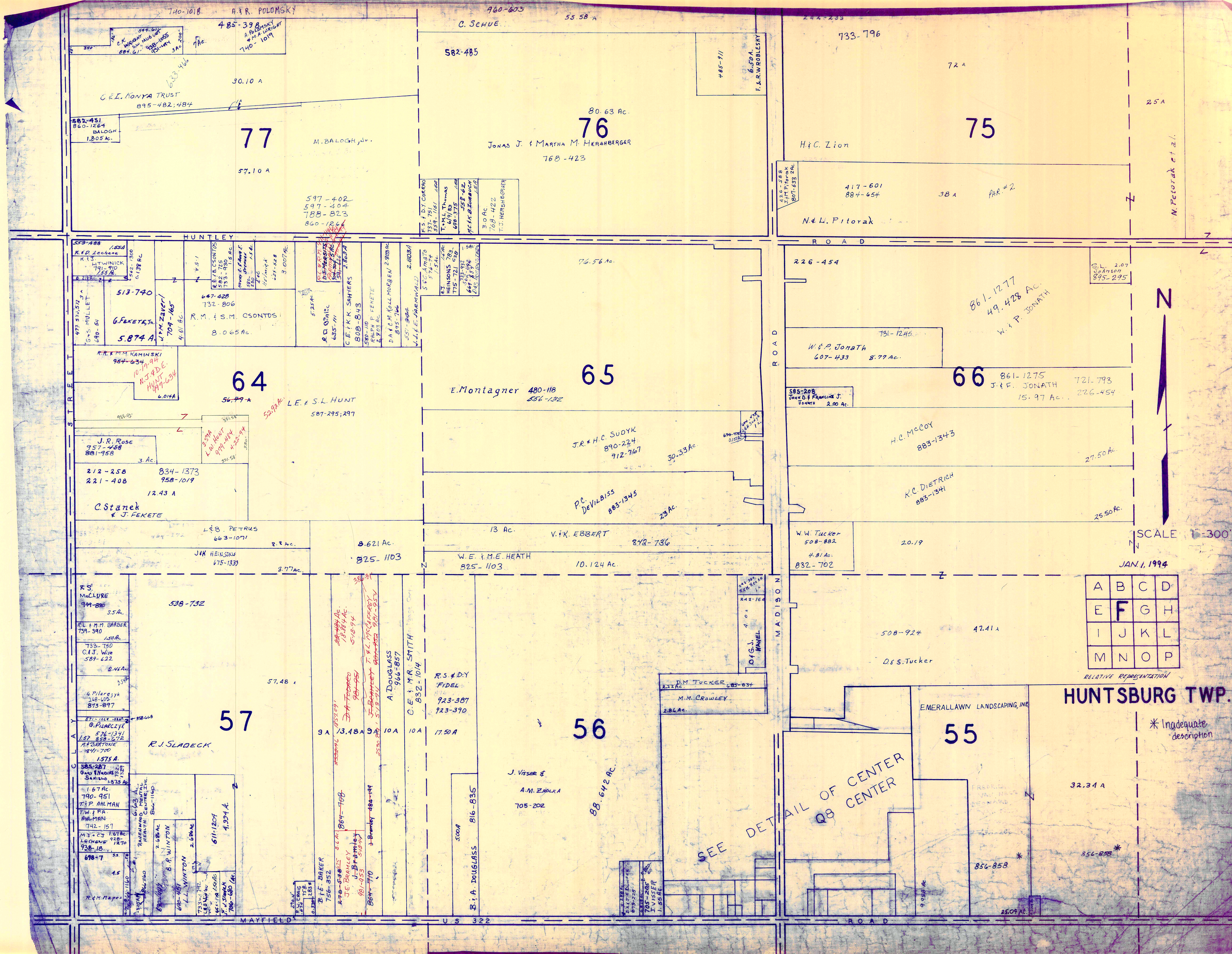
JAN. 1, 1994

\* Inadequate description

A	B	C	D
E	F	G	H
I	J	K	L
M	N	O	P

HUNTSBURG TWP.  
RELATIVE REPRESENTATION





SCALE 1"=300'

JAN. 1, 1994

A	B	C	D
E	F	G	H
I	J	K	L
M	N	O	P

RELATIVE REPRESENTATION

HUNTSBURG TWP.

\* Inadequate description

SEE DETAIL OF CENTER Q8 CENTER

740-1018 A.R. POLOMSKY  
 485-39  
 C.E. KONYA TRUST  
 895-482:484  
 30.10 A  
 77 M. BALOGH, Jr.  
 57.10 A

960-603 55.58 A  
 C. SCHUE  
 582-485  
 80.63 Ac.  
 76 JONAS J. & MARTHA M. HERSHBERGER  
 768-423

733-796  
 72 A  
 75 H.C. Zion  
 417-601  
 884-654  
 38 A PAR. #2  
 N.L. Pitorak  
 2.5 A  
 N. Pitorak et al.

HUNTLEY  
 513-740  
 6. FEKETE, Jr.  
 5.874 A  
 64 R.M. & S.M. CSONTOS  
 8.065 Ac.  
 647-428  
 732-806  
 56-77-A  
 LE. & S.L. HUNT  
 587-295, 297  
 52.99 Ac.  
 J.R. Rose  
 957-458  
 881-958  
 3 Ac.  
 212-258  
 221-408  
 834-1373  
 958-1019  
 12.43 A  
 C. Stanek & J. FEKETE

76.56 Ac.  
 65 E. Montagner  
 480-118  
 556-132  
 J.R. & H.C. SUDYK  
 890-224  
 912-767  
 30.33 Ac.  
 P.C. DEVILBISS  
 883-1345  
 23 Ac.

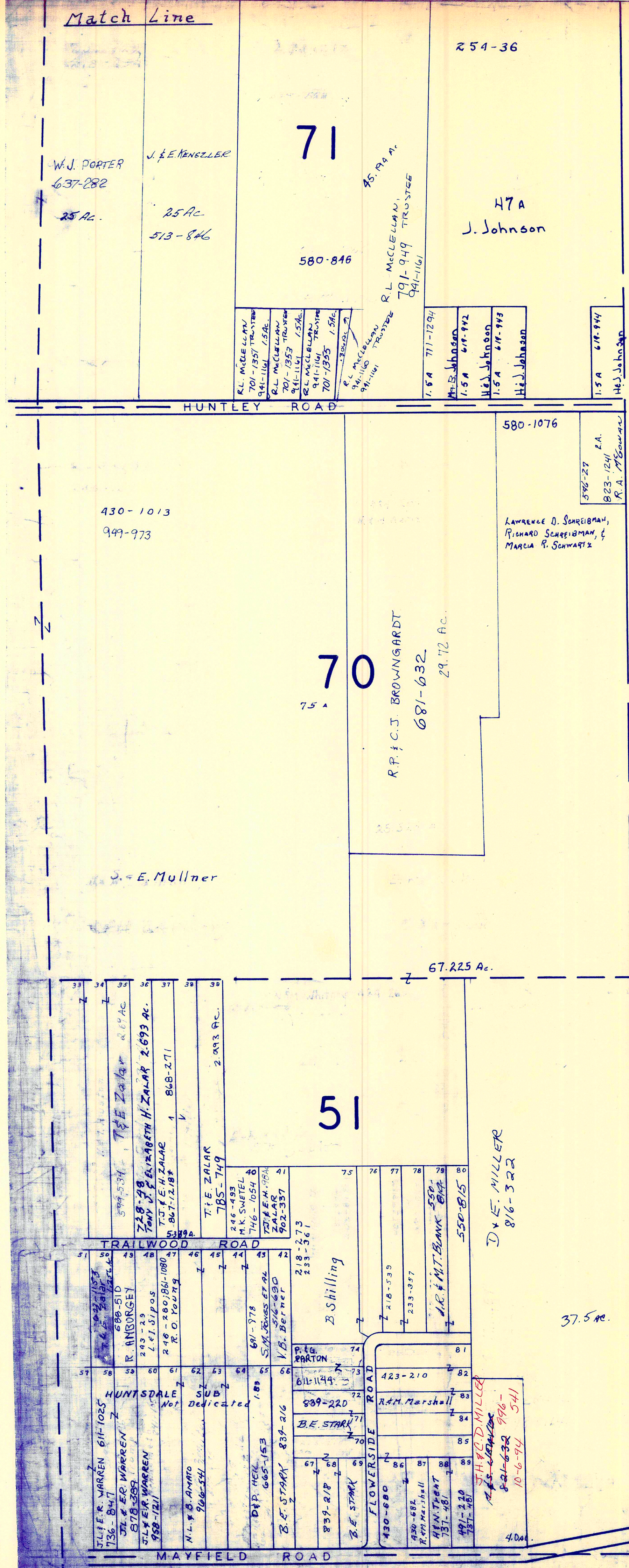
ROAD  
 226-454  
 861-1277  
 49.428 Ac.  
 W. & P. JONATH  
 607-433  
 8.77 Ac.  
 66 J. & F. JONATH  
 861-1275  
 721-793  
 15.97 Ac.  
 226-454  
 H.C. MCCOY  
 883-1343  
 27.50 Ac.  
 K.C. DIETRICH  
 883-1341  
 25.50 Ac.  
 W.W. TUCKER  
 508-882  
 4.81 Ac.  
 832-702  
 20.19  
 508-924  
 47.41 A  
 D.E. TUCKER  
 55  
 EMERALDLAWN LANDSCAPING, INC.  
 32.34 A  
 856-858  
 856-858

57 R.S. McCLURE  
 949-896  
 3.5 A  
 R.L. & M.M. BARBER  
 739-340  
 1.50 A  
 733-750  
 C.J. Wise  
 589-222  
 2.41 A  
 G. Pilecky  
 168-605  
 875-897  
 871-1024  
 G. PILARCZYK  
 576-1341  
 152-858-872  
 M. BORTONE  
 1847-700  
 1.575 A  
 R.J. SLADECK  
 57.48 A  
 9 A 3.48 A  
 10 A 10 A 17.50 A  
 A. DOUGLASS  
 966-857  
 C.E. & M.R. SMITH  
 832-1014  
 R.S. & D.Y. FIDEL  
 923-387  
 923-390  
 J. Visser & A.M. Zabolka  
 705-202  
 88.642 Ac.  
 B.A. DOUGLASS  
 816-835  
 500 A  
 MAYFIELD

56  
 13 Ac.  
 V.K. EBBERT  
 842-736  
 W.E. & M.E. HEATH  
 825-1103  
 10.124 Ac.  
 825-1103  
 8.621 Ac.  
 J.K. HEINSON  
 675-1333  
 8.77 Ac.  
 L.E. & S.L. HUNT  
 587-295, 297  
 52.99 Ac.  
 J.R. Rose  
 957-458  
 881-958  
 3 Ac.  
 212-258  
 221-408  
 834-1373  
 958-1019  
 12.43 A  
 C. Stanek & J. FEKETE  
 513-740  
 6. FEKETE, Jr.  
 5.874 A  
 64 R.M. & S.M. CSONTOS  
 8.065 Ac.  
 647-428  
 732-806  
 56-77-A  
 LE. & S.L. HUNT  
 587-295, 297  
 52.99 Ac.  
 J.R. Rose  
 957-458  
 881-958  
 3 Ac.  
 212-258  
 221-408  
 834-1373  
 958-1019  
 12.43 A  
 C. Stanek & J. FEKETE  
 57.48 A  
 9 A 3.48 A  
 10 A 10 A 17.50 A  
 A. DOUGLASS  
 966-857  
 C.E. & M.R. SMITH  
 832-1014  
 R.S. & D.Y. FIDEL  
 923-387  
 923-390  
 J. Visser & A.M. Zabolka  
 705-202  
 88.642 Ac.  
 B.A. DOUGLASS  
 816-835  
 500 A  
 U.S. 322

ROAD  
 226-454  
 861-1277  
 49.428 Ac.  
 W. & P. JONATH  
 607-433  
 8.77 Ac.  
 66 J. & F. JONATH  
 861-1275  
 721-793  
 15.97 Ac.  
 226-454  
 H.C. MCCOY  
 883-1343  
 27.50 Ac.  
 K.C. DIETRICH  
 883-1341  
 25.50 Ac.  
 W.W. TUCKER  
 508-882  
 4.81 Ac.  
 832-702  
 20.19  
 508-924  
 47.41 A  
 D.E. TUCKER  
 55  
 EMERALDLAWN LANDSCAPING, INC.  
 32.34 A  
 856-858  
 856-858  
 25.04 Ac.  
 ROAD





A S H T A B U L L A C O U N T Y



\* Inadequate description

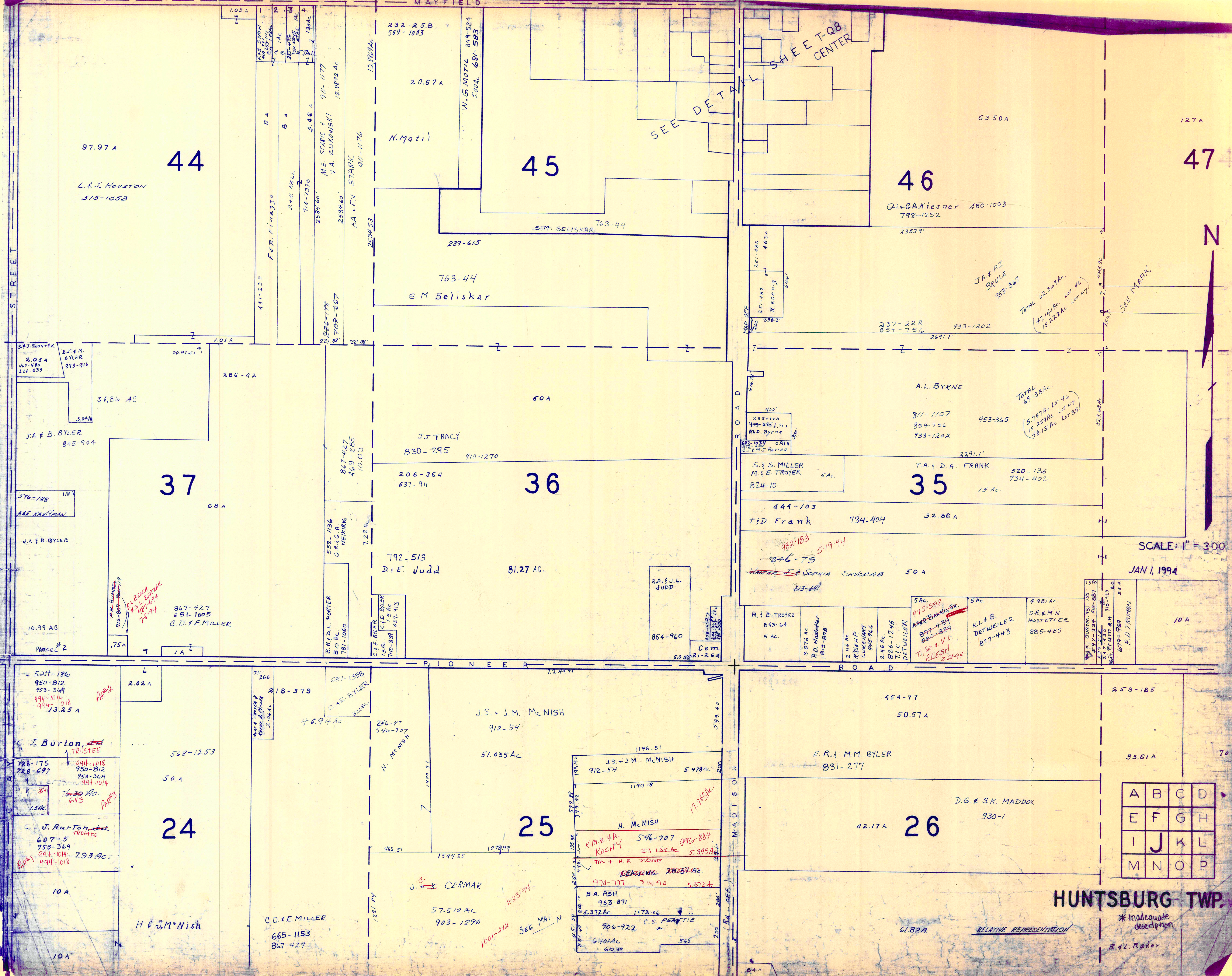
JAN 1, 1994  
Scale 1" = 300'

A	B	C	D
E	F	G	H
I	J	K	L
M	N	O	P

RELATIVE REPRESENTATION

HUNTSBURG TWP.





STREET

MAYFIELD

N

SCALE: 1" = 300'

JAN 1, 1994

A	B	C	D
E	F	G	H
I	J	K	L
M	N	O	P

HUNTSBURG TWP.

\* Inadequate description  
R. & L. Kader

97.97 A  
L. & J. Houston  
515-1053

44

232-258  
589-1083  
20.67 A  
N. Moti

45

46

QJ & BAKIESNER 480-1003  
798-1252

47

2.05 A  
46-480  
224-833  
D.J. & M. BYLER  
873-916

37

J.J. TRACY  
830-295  
910-1270

36

35

T.A. & D.A. FRANK  
520-136  
734-402

370-188  
A.E. KAUFMAN

J.A. & B. BYLER

10.99 AC  
PARCEL #2

867-427  
681-1005  
C.D. & E. MILLER

792-513  
D.E. JUDD

81.27 AC.

R.A. & J.L. JUDD

854-960

S. & S. MILLER  
M. & E. TROYER  
824-10

T. & D. FRANK  
734-404

992-183  
519-94  
246-79  
WALTER J. & SOPHIA SHIGERB  
813-641

M. & E. TROYER  
843-64  
5 AC.

P.D. HOSCHER  
1815-878

R.D. HOSCHER  
1815-878

T. & S. V. E. E. LESH  
3-2194

975-598  
877-439  
880-829

K.L. & B. DETWEILER  
877-443

D.R. & M.N. HOSTETLER  
885-485

679-969  
P.R. TRUMAN

524-186  
950-812  
953-364  
994-1014  
994-1018  
994-1018  
13.25 A

24

J. BURTON TRUSTEE  
788-175  
788-697  
994-1018  
950-812  
953-369  
994-1014  
6.33 AC.  
643

J. BURTON TRUSTEE  
607-5  
953-369  
994-1014  
994-1018

10 A

10 A

H & J. McNish

711-266  
18-373  
C. & E. BYLER

568-1253

50.0 A

C.D. & E. MILLER  
665-1153  
867-427

687-1358  
C. & E. BYLER

46.94 AC.

57.512 AC  
903-1296

J. K. CERMAK

J.S. & J.M. McNish  
912-54

51.035 AC

25

H. McNish  
546-707  
996-884  
23-132 AC  
5395A

B.A. ASH  
953-871  
5.372 AC.

906-922  
C.S. PEATTIE  
6401 AC  
610.66

J.S. & J.M. McNish  
912-54  
5.478 AC.

1196.51  
1190.18

974-777  
315-94  
5.372 AC

6401 AC  
610.66

154-77  
50.57 A

E.R. & M.M. BYLER  
831-277

42.17 A

61.82 A

259-185

D.G. & S.K. MADDOX  
930-1

33.61 A

RELATIVE REPRESENTATION

259-185

33.61 A

70 A

RELATIVE REPRESENTATION

\* Inadequate description  
R. & L. Kader

BOARD OF TRUSTEES OF  
HUNTSBURG TOWNSHIP  
824-668

47

97 Ac.

609-303

Huntsburg Twp. Trustees  
588-1330 18 Ac.

MAYFIELD  
J.P. LOVE, TRUSTEE  
GAIL JOANNE LOVE  
REVOCABLE TRUST  
981-176  
15.879 Ac.

48

981-180

50.58 Ac.

72.80 A

TOTAL AC on TAX DUPLICATE  
1335.85

710-582  
722-916

49

152.50 A

36 A

20 A

237-222  
854-756  
933-1202

A.L. BYRNE  
953-365

J.A. & P.J. BRULE  
953-367

TOTAL 62.363 Ac.  
(47.141 Ac. Lot 46  
15.222 Ac. Lot 47)

TOTAL 69.138 Ac.  
(5.748 Ac. Lot 46  
15.259 Ac. Lot 47  
48.131 Ac. Lot 55)

58.73 Ac.

862-984  
LEAVING 68.206 on TAX DUPLICATE  
- .8159  
67.3901 Ac.

Mendowidge Farm  
647-177

J.K. BETKER  
870-1053

32.86 A

T.D. FRANK  
734-404  
444-103

50 A

10 A  
L.K. BUTTON

613-641  
982-83  
5-19-94  
S. SHVORAB

REGA ARMSTRONG  
917-141 JA  
66-702  
62-841 5A  
917-124W  
REGA ARMSTRONG  
917-1239 5A  
62-5-5  
661-730  
61-130  
826-560  
M.M. MILLER

34

52.19 A

M.M. MILLER  
665-1252

A.B. YODER  
657-288

43 A

5+2-1209  
999-346  
11-1-94

DA. DROTAR

33

99 Ac.

J.J. & E.B. MAST  
599-505

233-320-273  
728-691\*  
912-1157\*

46.15 A

THE RUDOWSKY  
FAMILY TRUST  
STEPHEN RUDOWSKI, SR.  
TRUSTEE

32

104.69 A

17.21 A



SCALE 1" = 300'

Match Line

R.L. G.A. GWINN  
553-403  
B.L.B.A.E.  
25.43 A  
669-852  
R.L. & G.A. GWINN

27

R.G. & B.L. TOWNSEND  
637-546  
17 Ac

D.W. & O.D. MILLER  
718-1082  
24.103 Ac  
663-839  
11.83 Ac

637-915  
701-48 F. J. J. J.  
E.M. J. J. J. J.  
625-495  
637-1081  
E.H.K.  
M. DONALD  
3,199 Ac  
TOTAL = 11,508 Ac  
792-991

J.+I. DETWEILER  
699-127, 129

49.30 Ac.

J.+I. DETWEILER  
699-127, 129

7.5 A  
C. T. J. J. J. J.

35.64 Ac.

28

73 A

SEE MAP  
5 Ac  
SEE MAP  
5 Ac  
SEE MAP  
5 Ac  
SEE MAP  
5 Ac

N.R. & E.J. BYLER  
680-340

523-708

188-525  
133-39  
811-1085  
844-624

A. MISTERKA

29

98.12 Ac

R.A. MISTERKA  
625-462

4.5 Ac

PARCEL #2

PARCEL #1

PARCEL #3

PARCEL #4

PARCEL #5

PARCEL #6

PARCEL #7

PARCEL #8

PARCEL #9

PARCEL #10

PARCEL #11

PARCEL #12

PARCEL #13

U. & J. BYLER  
562-329  
743-16

2 Ac

C.J. & M.H. Detweiler  
3,997 Ac  
701-1278

Match Line

E.M. RUNNING  
621-889

20 A

18.25  
702-665  
C.J. & M.H. Detweiler

844-624

19.87 Ac

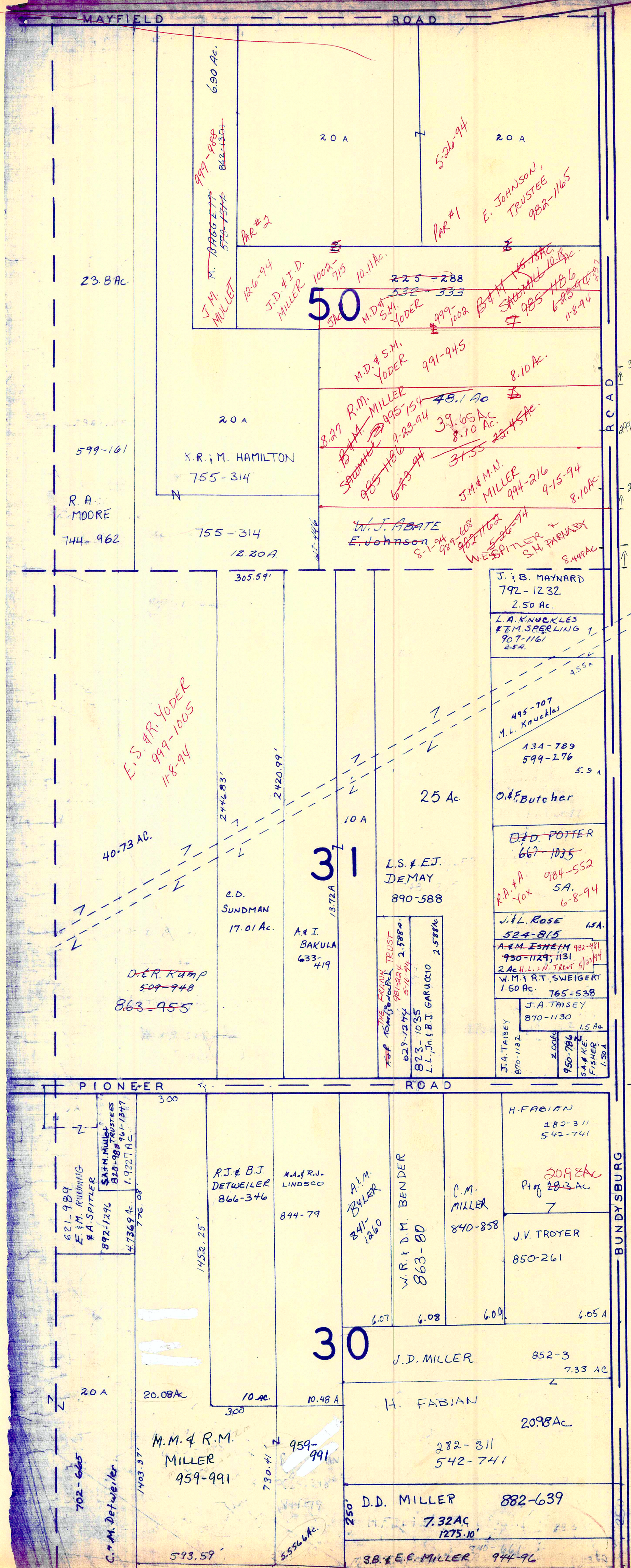
HUNTSBURG TWP.

RELATIVE REPRESENTATION  
\* Inadequate description

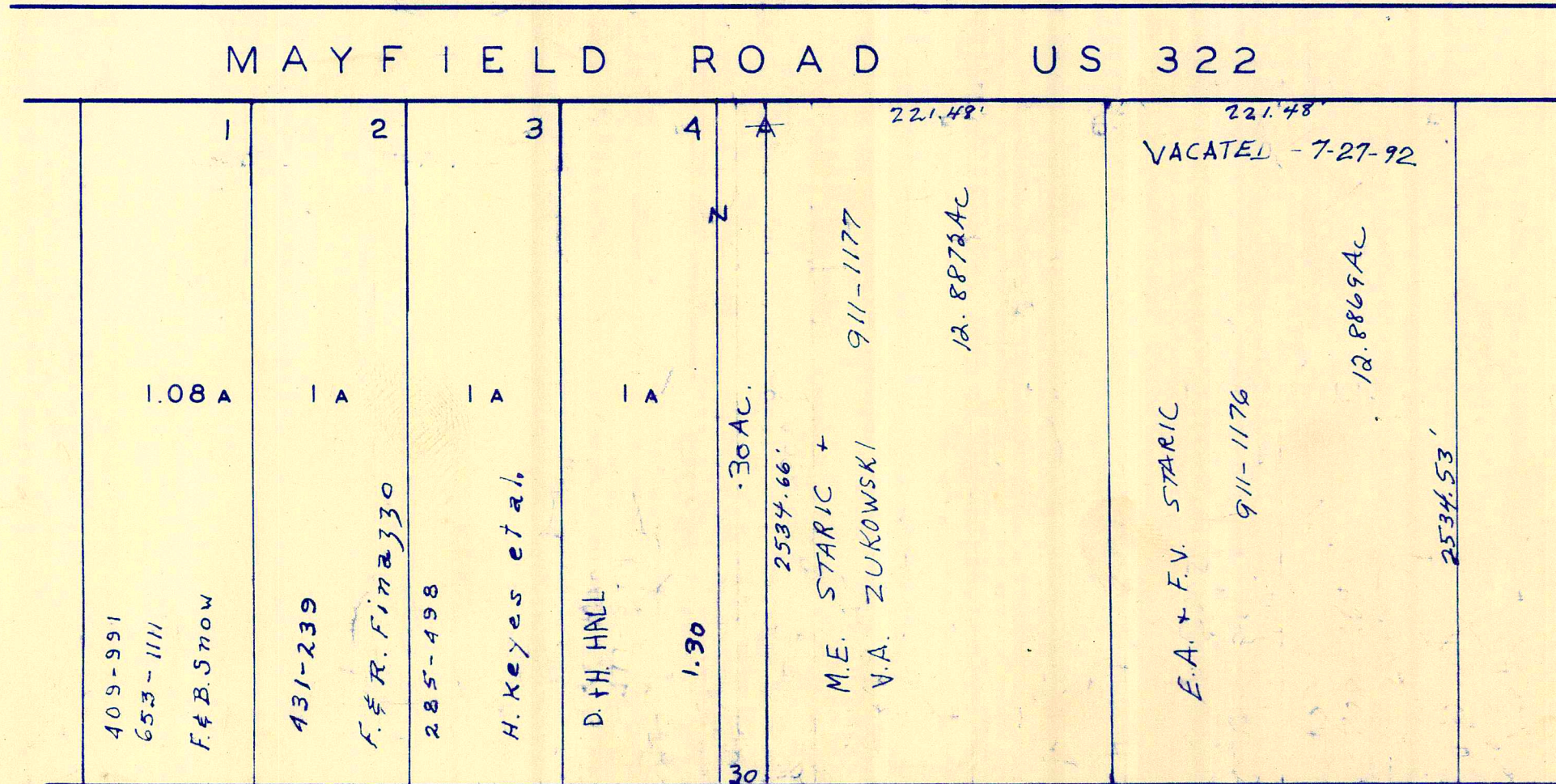
JAN 1, 1998

SEE PAGE 1

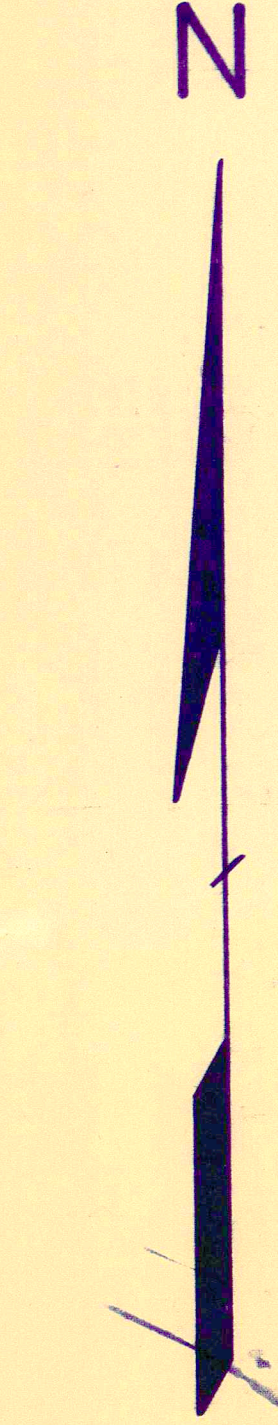
A	B	C	D
E	F	G	H
I	J	K	L
M	N	O	P



A S H T A B U L A C O U N T Y



SICZ SUBDIVISION VACATED = BLOCK A,  
 VOL. 6 - PG. 87  
 LOT 44  
 SCALE 1" 100'



SCALE 1" 300'

JAN 1, 1994

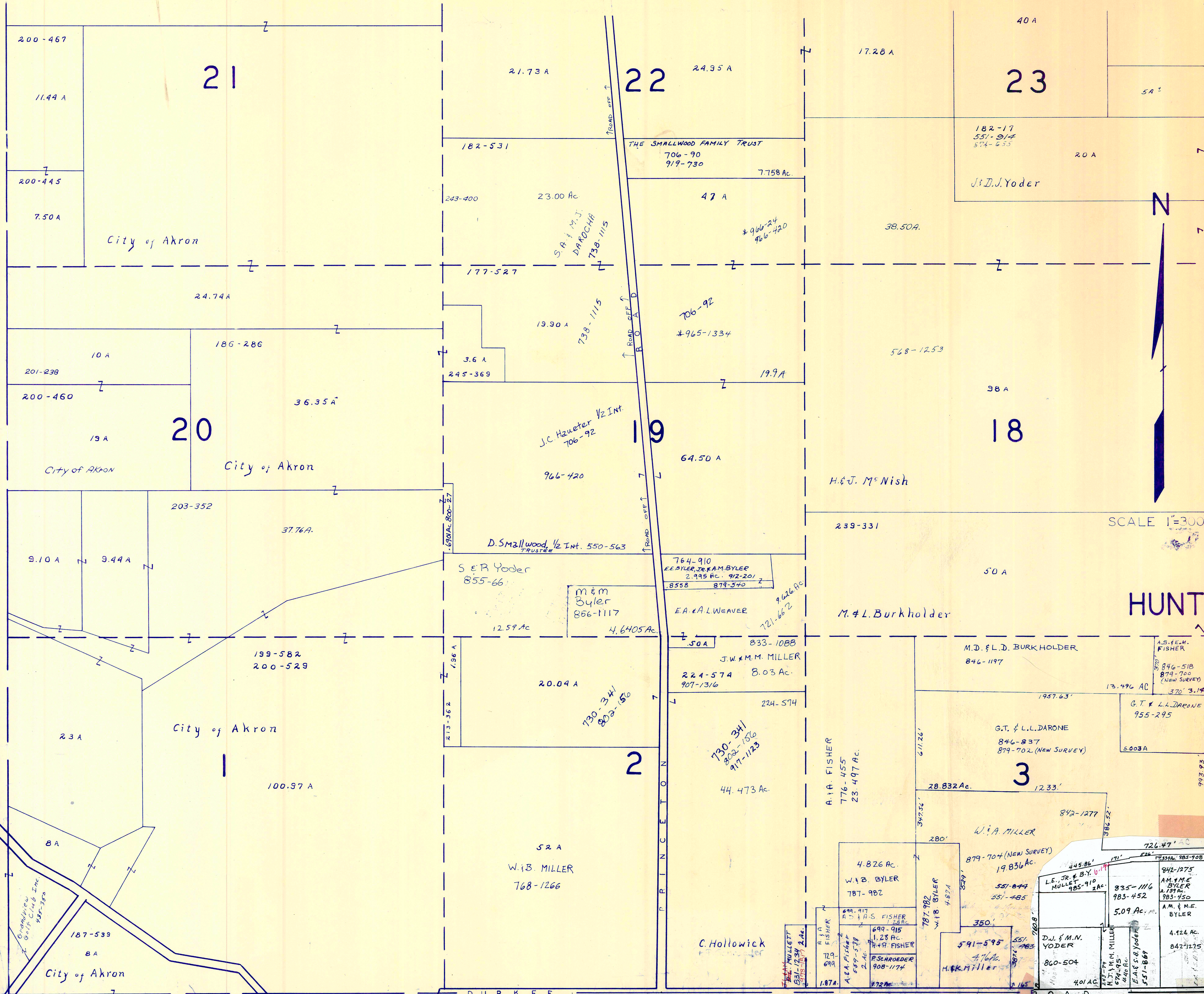
\* Inadequate description

RELATIVE REPRESENTATION

A	B	C	D
E	F	G	H
I	J	K	L
M	N	O	P

HUNTSBURG TWP.

C L A R I D O N T O W N S H I P



SCALE 1"=300'

A	B	C	D
E	F	G	H
I	J	K	L
M	N	O	P

HUNT SBURG TWP

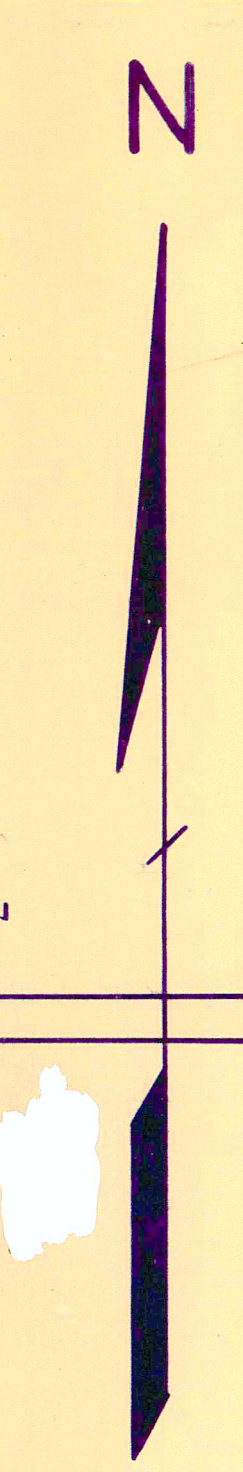
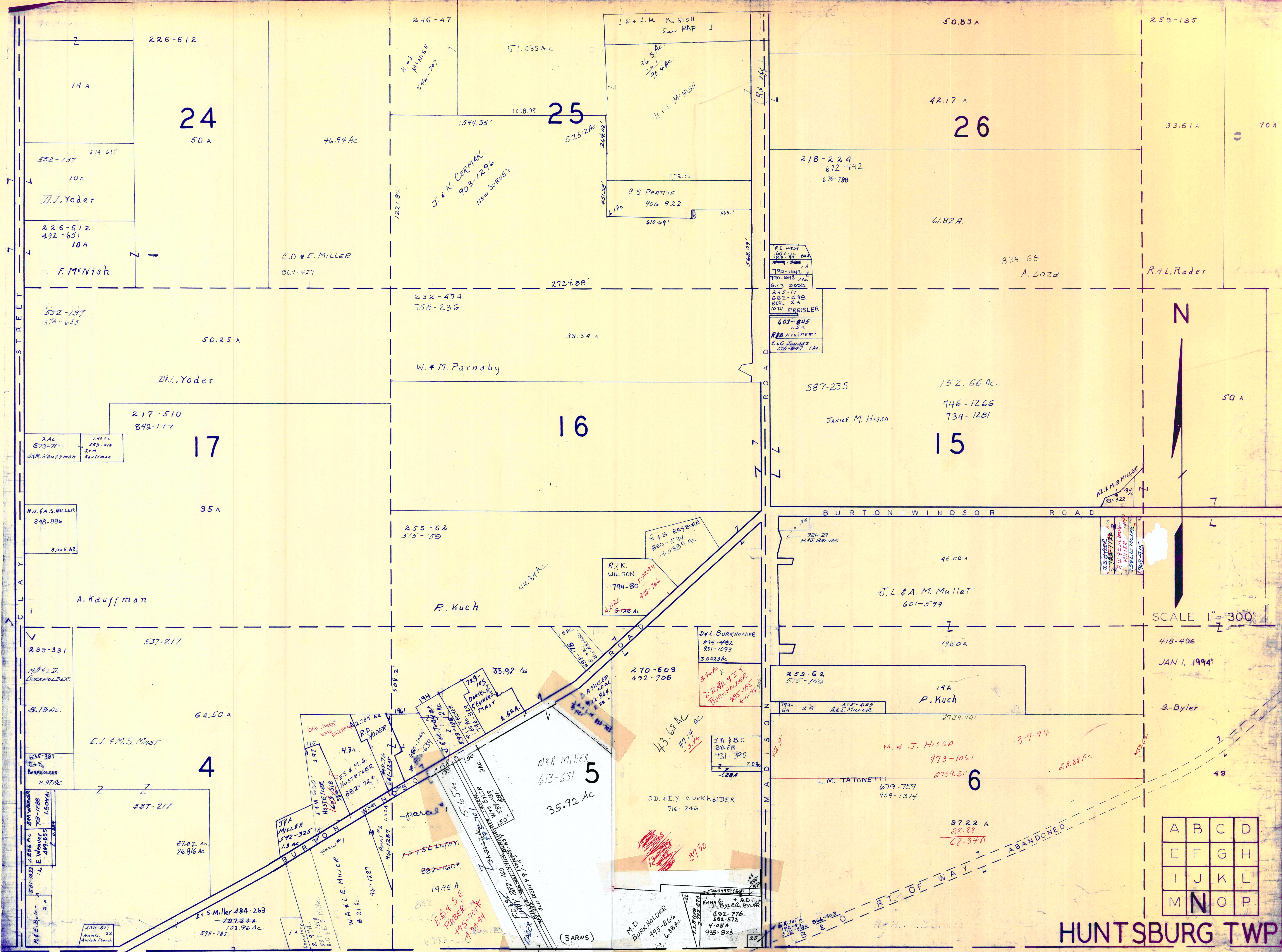
RELATIVE REPRESENTATION

JAN 1, 1994

D U R K E E R O A D

M I D D L E F I E L D T O W N S H I P

\* Inadequate description



SCALE 1" = 300'  
 418-496  
 JAN 1, 1994

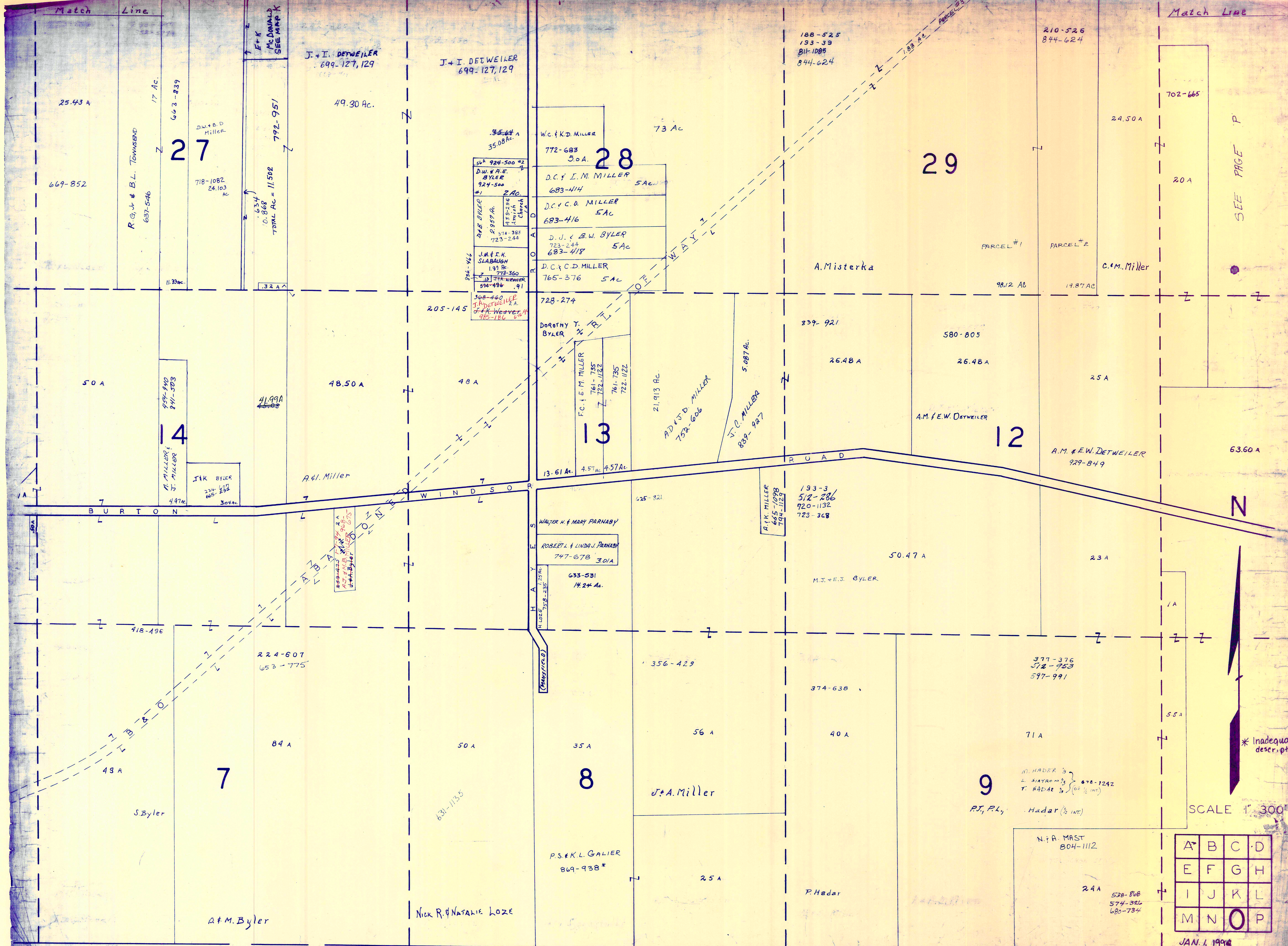
A	B	C	D
E	F	G	H
I	J	K	L
M	N	O	P

# HUNTSBURG TWP

# MIDDLEFIELD TOWNSHIP

RELATIVE REPRESENTATION

\*Inadequate description



SEE PAGE P

N

\* Inadequate description

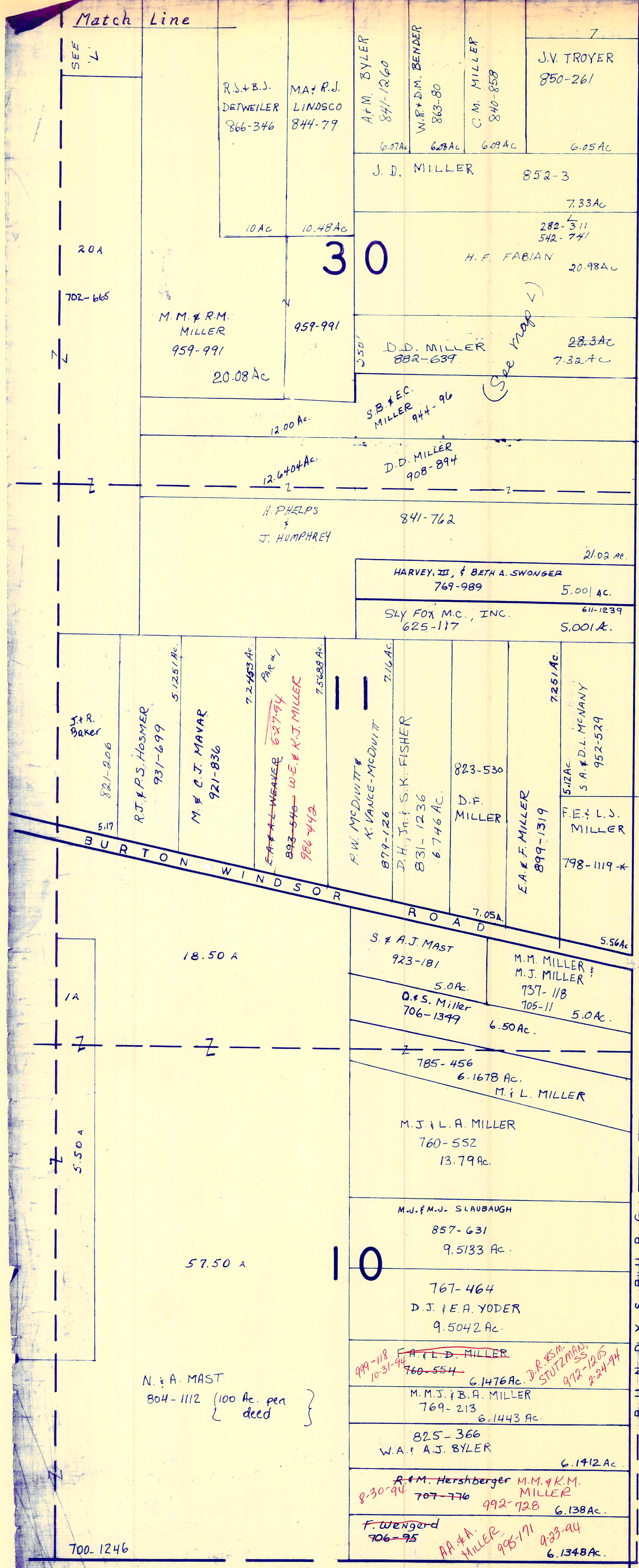
SCALE 1" = 300'

A	B	C	D
E	F	G	H
I	J	K	L
M	N	O	P

JAN. 1, 1994

M I D D L E F I E L D T O W N S H I P H U N T S B U R G T W N

RELATIVE REPRESENTATION



A S H T A B U L A C O U N T Y  
 B U R T O N W I N D S O R R O A D  
 M I D D L E F I E L D T W P.



SCALE 1" = 300  
 JAN 1, 1994

RELATIVE REPRESENTATION

\* Inadequate description

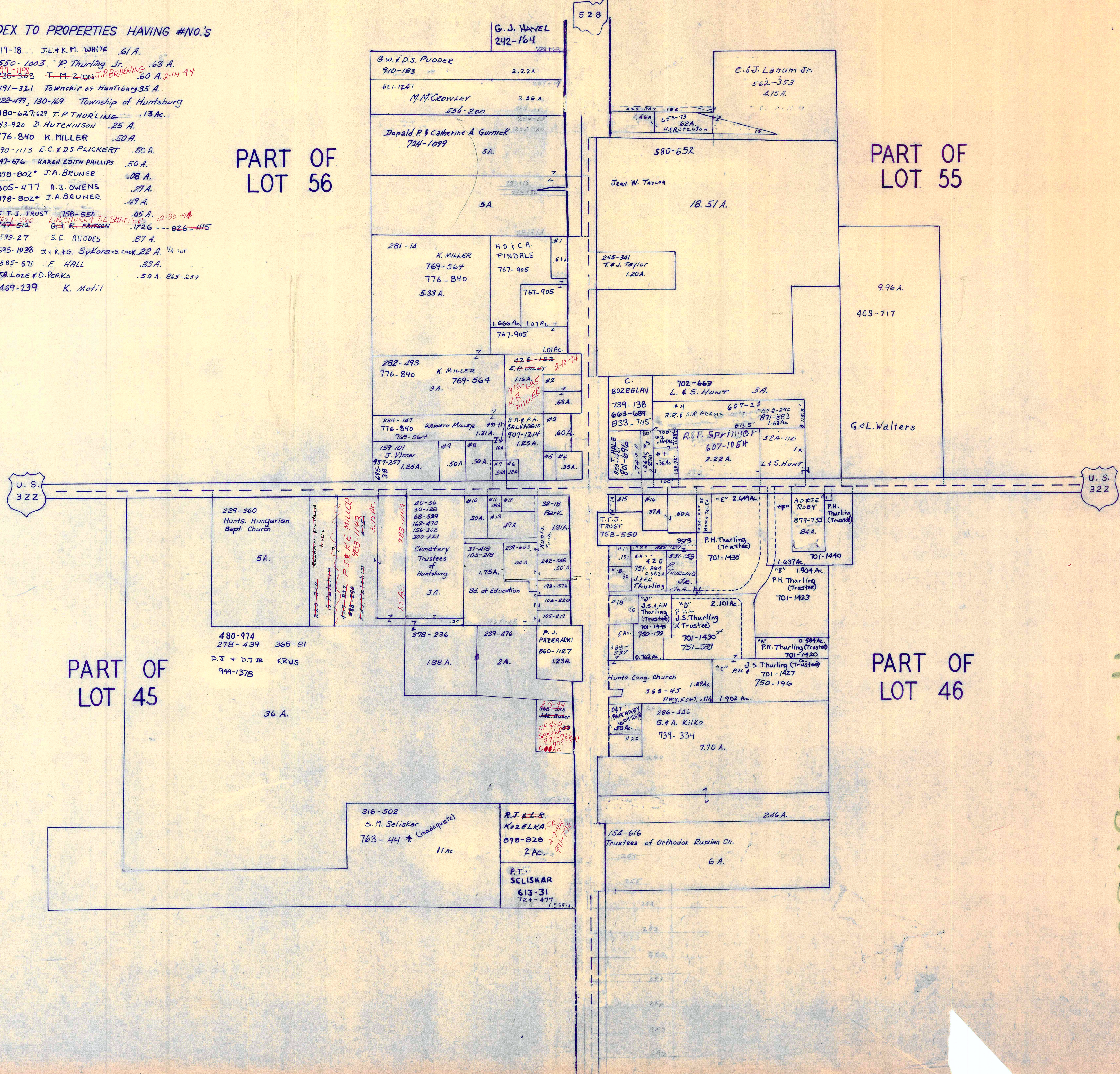
A	B	C	D
E	F	G	H
I	J	K	L
M	N	O	P

HUNT SBURG TWP.

# HUNTSBURG TP. CENTER

## INDEX TO PROPERTIES HAVING #NO.'S

- #1 719-18 J.L. & K.M. WHITE .61 A.
- #2 550-1003 P. Thurling Jr. .63 A.
- #3 730-363 T.M. ZION J.P. BRUNING .60 A. 2-14-94
- #4 491-321 Township of Huntsburg .35 A.
- #5 122-499, 130-169 Township of Huntsburg
- #6 880-627, 629 T.P. THURLING .13 Ac.
- #7 943-920 D. HUTCHINSON .25 A.
- #8 776-840 K. MILLER .50 A.
- #9 890-1113 E.C. & D.S. PLICKERT .50 A.
- #10 747-676 KAREN EDITH PHILLIPS .50 A.
- #11 878-802\* J.A. BRUNER .08 A.
- #12 805-477 A.J. OWENS .27 A.
- #13 878-802\* J.A. BRUNER .49 A.
- #14 T.T.J. TRUST 158-558 .85 A. 12-30-94
- #15 747-512 G.L.R. PATSON .1726 --- 826-115
- #16 599-27 S.E. RHODES .87 A.
- #17 695-1038 J. & R. G. SYKORAKS COOK .22 A. 1/4 INT
- #18 585-671 F. HALL .33 A.
- #19 TA-Loze & D. PERKO .50 A. 865-259
- #20 469-239 K. Motil



PART OF  
LOT 56

PART OF  
LOT 55

PART OF  
LOT 45

PART OF  
LOT 46

HUNTSBURG

JAN. 1, 1994  
SCALE: 1 in. = 200'

RELATIVE REPRESENTATION

\* Inadequate description